



# “Breakfast with the Mayor and Guests”

## **TOWN OF MILTON**



Presented to the  
Milton Chamber of Commerce  
Tuesday February 15, 2011  
Panel Host: Mario Belvedere

Engaging, Balanced, Connected



- Mayor Krantz welcomes guests
- Town wins E-newsletter provincial award

## Mayor Gord Krantz welcomes



Honourable Bob Chiarelli

Ontario Minister of Infrastructure

Engaging, Balanced, Connected



# Today's Mayors Roundtable Panel Members

- Bill Galloway, Senior Vice President Canada Holcim
- Dean Chudleigh, President Chudleigh's
- Brad Hart, General Manager Manheim Toronto Auto Auctions
- Mayor Gord Krantz

Engaging, Balanced, Connected

# Mayor's Business Leaders Roundtable

- Mayor's Roundtable meets two times a year
- Forum to advise on "Strategic Civic Issues"

Mayor Krantz

Michael Wilson  
General Manager  
RecoChem Inc.

Dean Chudleigh  
President  
Chudleigh's

Frank Lasowski  
President & CEO  
Milton Hydro

Jane Holmes  
VP of Corporate Affairs  
Woodbine Ent.

Bill Galloway  
Senior VP Canada  
Holcim

Trent Ogilvie  
President  
Roxul Inc.

Phil King  
President  
Orlando Corporation

Ross Mitchell  
President & General Manager  
Madison Chemical

Bruce Gottzmann  
Senior Director of Operations  
Sobey's

Brad Hart  
General Manager  
Manheim Auto Auctions

Frank Doracin  
President  
Mattamy

Bill Finan  
President  
MTB Truck & Bus Collision

Cliff Baker  
VP Operations, Gordon Food Service



# Roundtable Topics (2006 – 2011)

- Laurier at Milton Project
- Using Debt to Build Infrastructure
- Responding to the Economic Downturn
- Growth Management
- Green Energy
- Town and Business Budget Priorities 2010
- Metrolinx – GTA Transportation
- Support of Community Charities
- Investment in the Arts Campaign (Corporate Naming Rights Program)

Engaging, Balanced, Connected

A banner image showing a modern building at dusk with the text "Milton's Guiding Document" and "Destiny Milton 2" overlaid in large white font.

# Milton's Guiding Document

## "Destiny Milton 2"

Destiny Milton 2 was adopted by Council in 2006:

### Key Goals

- A responsible, cost effective and accountable local government
- Well managed growth; well planned spaces
- A diverse and sustainable economy
- A thriving natural environment
- A safe, livable and healthy community

"Local government provide basic service and **PLAN and BUILD COMMUNITY INFRASTRUCTURE** that improves quality of life and supports economic opportunities."

Engaging, Balanced, Connected

A banner image showing a modern building at dusk with the text "2010 Plans Approved" overlaid in large, white, 3D-style letters.

# 2010 Plans Approved

DM2 Goal: Well managed growth; well planned spaces

- Sustainable Halton Regional Plan (Dec 2009)
- Official Plan Update/Intensification (June 2010)
- Derry Green Business Park (June 2010)
- Boyne Survey (June 2010)
- Milton Education Village Design Concept

Engaging, Balanced, Connected

A banner image showing a modern building at dusk with lights on. The text "2010 Financial Plans Released" is overlaid in large, white, 3D-style font.

# 2010 Financial Plans Released

DM2 Goal: A responsible, cost effective and accountable local government

- Maintains principle of “user pays” for new service
- Maintains a Capital Provision \$2,406/unit agreement
- Maintains reliance on DCs to fund new growth

Engaging, Balanced, Connected



# Funding Growth & Development

*The Town's current Strategic thinking suggests that new residential and industrial growth pay its way → Results in among highest DCs which support building local infrastructure and lower municipal taxes.*

---

## **Panel Question 1**

“What’s your view of this direction and do you think it is more advantageous for businesses to have lower taxes or lower development charges?”



# Largest Capital Investments in 2010

DM2 Goals: A diverse and sustainable economy  
A livable and healthy community

<b>Project Description</b>	<b>2010 Gross \$</b>
Milton Sports Centre Expansion	12,736,227
Milton Centre for the Arts	8,139,902
Main Street Grade Separation	7,887,369
Bronte Street – Louis St Laurent to Derry Road	6,426,337
Central Library	5,001,433
Main Street Bronte to Tremaine	4,362,371
Civic Operations Centre	3,355,665

2010 Total Capital Infrastructure Investment in 73 projects totaling **\$70.5 M.**

Engaging, Balanced, Connected

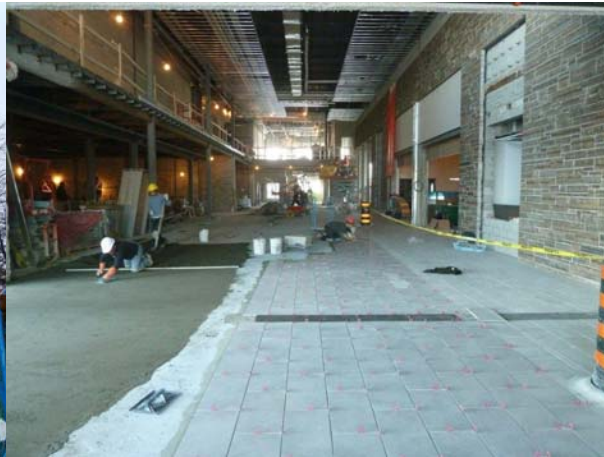
# Milton Centre for the Arts

## Project Facts

- Current schedule: open June 2011
- 30,000 sf library, 24,175sf visual arts centre - 500 seat theatre
- Total Project Cost = \$39.8 M
- Provincial Contribution = \$8,114,920
- Federal Contribution = \$8,114,920



MCA – Library from  
Thompson Road



Laying the floor in the  
Escarpment Hall



View from balcony of theatre

# Milton Sports Centre Expansion

## Project Facts

- Current Schedule: open Fall 2011
- 136,000sf expansion two 2 ice rinks (one with 500 seats, other with 250 seats), gymnasium, pool, elevated walking track
- Total Project Cost = \$40.6 M
- Provincial Contribution = \$6,678,425
- Federal Contribution = \$6,678,425



MSC Rink D seating



MSC walking track view to  
ice area



MSC Competition pool.



## **John Tonelli Sports Centre**

- Replace arena floor, boards, glass, refrigeration piping
- Roof repairs/upgrades

Total Project Cost = \$3,086,203

Provincial Contribution = \$1,000,000

Federal Contribution = \$1,000,000



Tonelli boards and glass.



John Tonelli Sports Centre –  
Front entrance



Tonelli lobby.



## Campbellville Community Centre

Reconstruction of:

- Community Program and Tennis Club Facility
- Tennis courts (4 lit)

Total Project Cost = \$2,948,200

Provincial Contribution = \$982,733

Federal Contribution = \$982,733



Campbellville / Nassagaweya Tennis Club

A photograph of a modern, multi-story building at dusk or night, with interior lights glowing. The building has a mix of brick and glass facades. The text "Milton Education Village" and "Laurier at Milton Campus" is overlaid in large, white, serif font.

# Milton Education Village Laurier at Milton Campus

DM2 Goal: A diverse and sustainable economy

## In 2010

- Completed Design Charette
- Planning approval Sustainable Halton Plan
- Laurier Capital Plan to Province
- Town took ownership of 150 acre site through land swap
- Created 7 member Partnership Agreement including Sheridan College, Wilfrid Laurier University, Town of Milton, Mattamy, Del Ridge Investments, Milton Hydro and Milton Land Four Investments

Engaging, Balanced, Connected



# Building Infrastructure for Balanced Growth

*The Town has made great strides in building infrastructure for parks, recreation, cultural, civic facilities, roads, bridges and planning for balanced growth through the Education Village project.*

---

## **Panel Question 2**

“What do you think the development of the Laurier at Milton campus and the proposed innovation research park will mean to this community?”



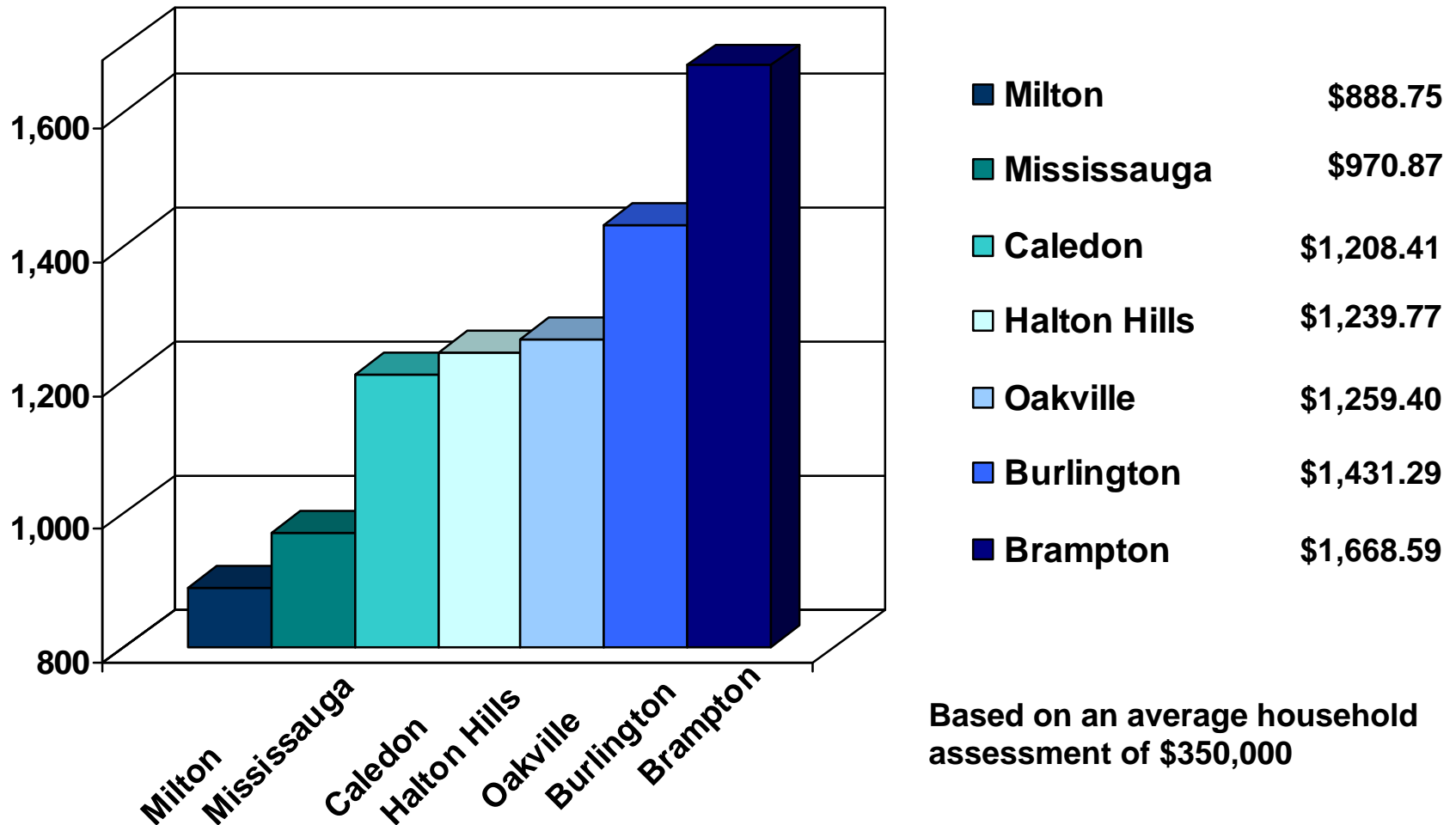
# Financing Balanced Growth

DM2 Goals: Responsible, cost effective, accountable  
A livable healthy community

- Local Tax Comparison (chart)
- 2010 Debt Capacity Ratio based on 2008 FIR's (4.57%)
- Capital Funding of Town Projects (2011)
  - 59% DC / Capital Provision
  - 4% Debentures
  - 1% Tax rate support
  - 18% Grants/Donations
  - 16% Reserves
  - 1% Hydro Dividend

Engaging, Balanced, Connected

# Comparison of 2010 Approved Local Taxes



Based on an average household assessment of \$350,000



# Local Service Levels

9% local tax increase =  
Mississauga

39% local tax increase = Halton  
Hills

61% local tax increase =  
Burlington

88% local tax increase =  
Brampton

Milton service enhancements that could be accommodated in a 9% tax increase (\$2.9M) could include:

- Saturday & Industrial Park Transit Service (1%)
- 24/7 Staffing Fire Hall (6%)
- Hospital Levy (1%)
- Enhanced Bike Trails (1%)



# Enhancing Local Services?

*The analysis shows that we can add a 9% local tax increase and still be the lowest tax municipality with enhanced community services.*

---

## **Panel Question 3**

“What would you advise our Council to do?”

1. Status Quo – No tax increase, keep services the same

OR

2. Raise taxes to Mississauga rate and add local services

Engaging, Balanced, Connected

# Investment in Arts Campaign



- Legacy Fund
- \$2.1 million to date
- Campaign ends Feb 28
- 157 seats, 7 keys, 1 room left

**\* Here to Accept Donations\* THANKS!**

Mattamy Theatre

Atrium – to be announced

Holcim Art Gallery

Chudleigh’s Box Office

MinMaxx Hall

Del Ridge Community Room

COGECO Escarpment Hall

Engaging, Balanced, Connected

